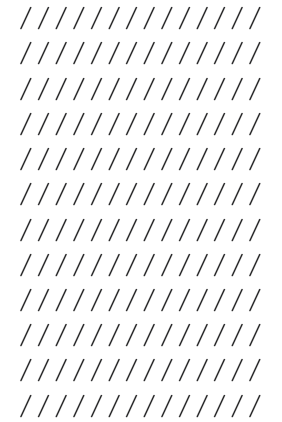


ROTATE
The kind soap dispenser



RESPONSIBLE INNOVATION PROJECTS

This category is focused on projects innovative that transform waste into wealth, to open the way to a sustainable growth. Responsibility does not is only the goal of the project, but its intrinsic component, at all levels.

We invite creatives to think and develop community support systems and services and their problems.

This category is for projects to improve our attitudes, to redesign the cohabitation between Man and nature in balance.

Projects can therefore have a vision wide-ranging design and technology, imagining solutions for an impact significant on uncontrolled consumption of natural resources.

ROTATE

The gentle soap dispenser

/

Rotate is a soap dispenser composed by three main parts: a transparent container to hold and check the soap level, a Roll-On ball and the support created with two interlocking parts.



This project is born from the will to create a product/service offering an original and inedited solution, in order to meet a particular need.

Today sanitizing hands have become essential for common health and soap dispensers are placed at the entrance of any location, whether it is a shop, a bar or any other.

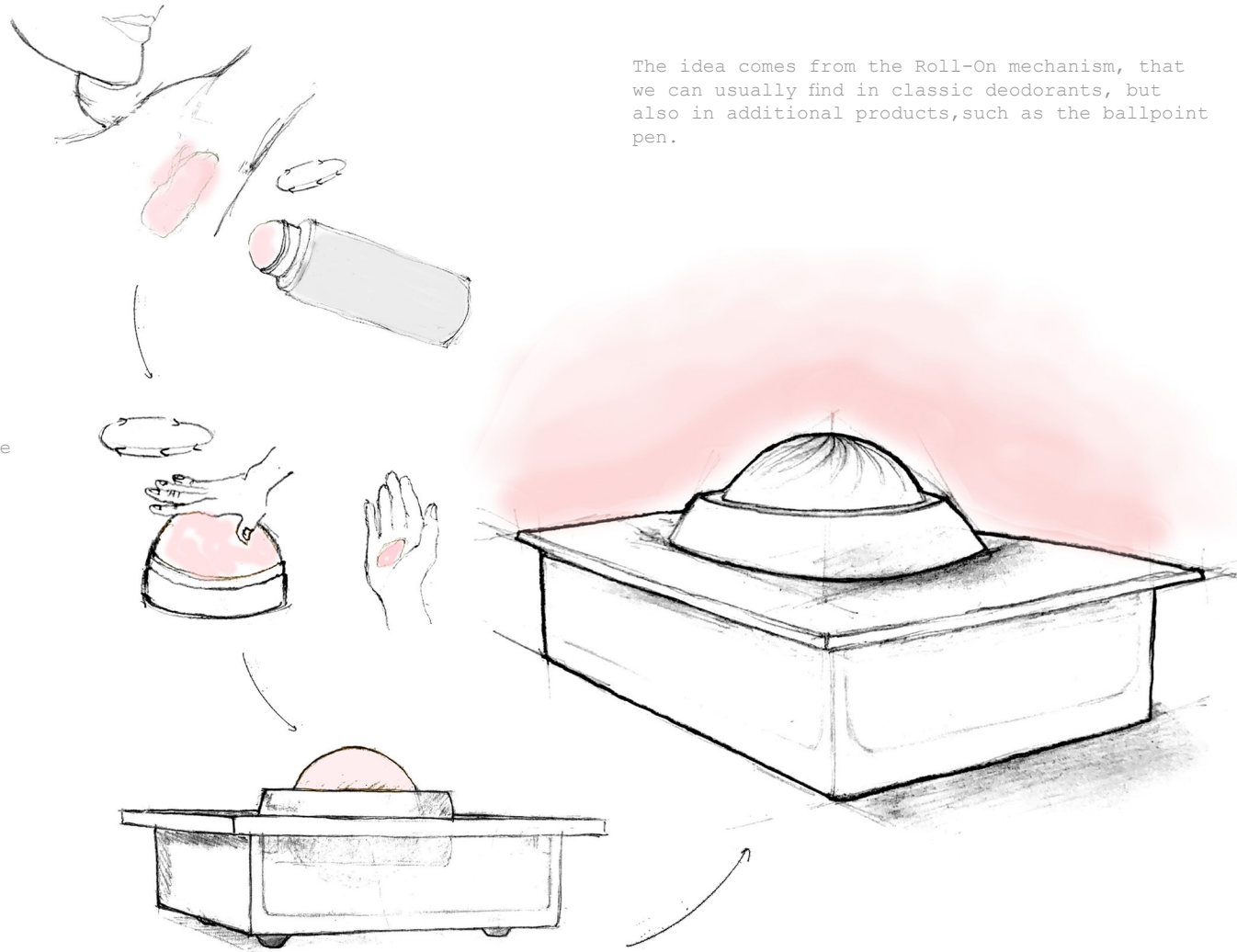
However, there are people which are unable to use fingers or apply force with them, and they struggle with that and even fail to use them as it is required an effort with ends.

That's how Rotate is born.



The idea comes from the Roll-On mechanism, that we can usually find in classic deodorants, but also in additional products, such as the ballpoint pen.

Representation of the willingness to bring the functionality of the sphere into sanitizing dispensers. The goal is to achieve the spillage of product with minimum hand and fingers effort.



Here there's the final version of the project, with rounded corners and softer lines.

Square version of the project.

This Dispenser, besides owning a unique aesthetics and design, has been designed to allow people with problems in the use of upper limbs, in particular hands and fingers, to be able to hygienize hands with a minimal effort.

For this reason the mechanism has been studied with the aim to help the user to carry out the action applying as little movement and strength as possible.

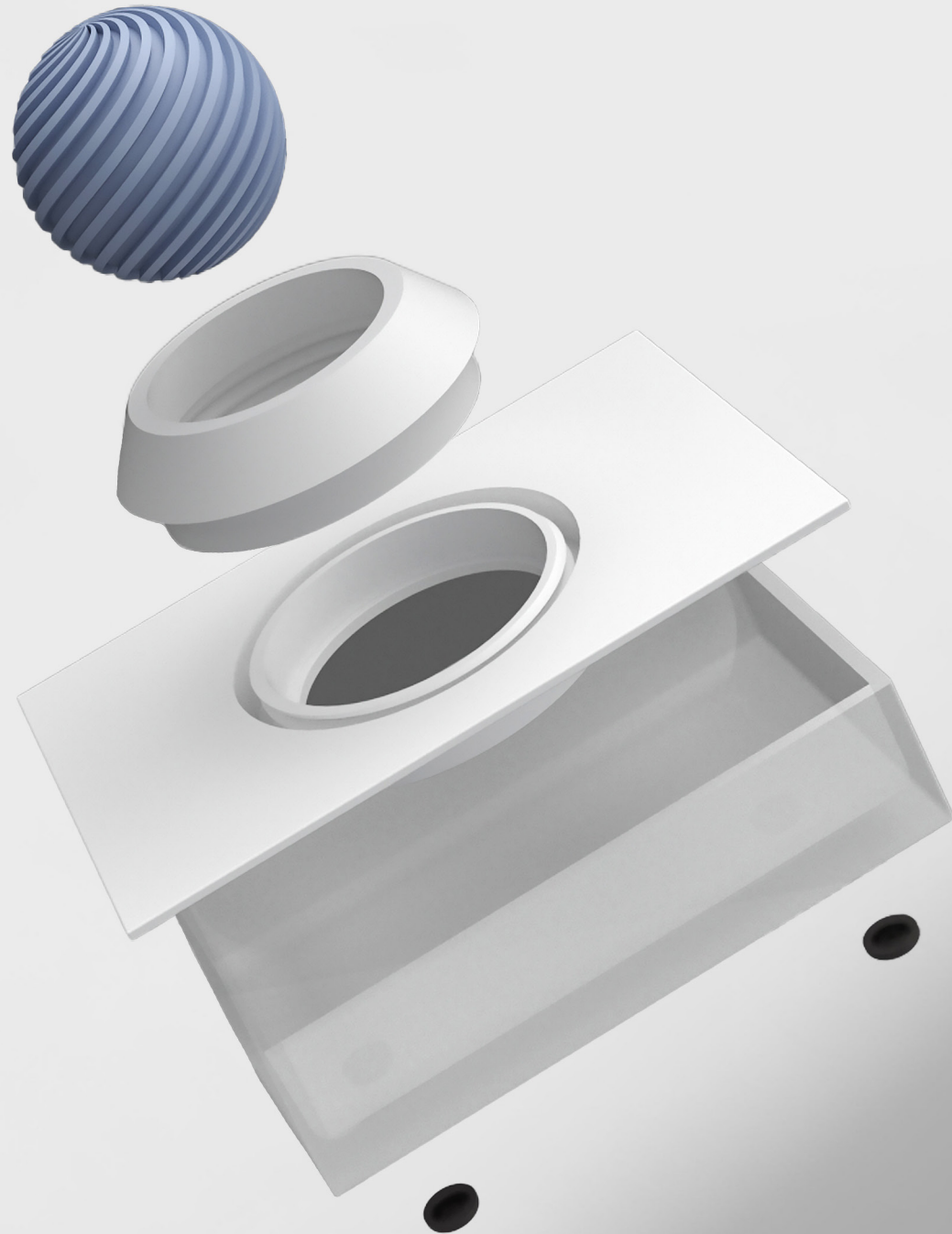
There is no need to press, pull, crush or push, as it would be with normal dispensers, but you need only to turn the palm of the hand on the sphere so that it brings the product to the surface.

Sustainability is the key of the nowadays design world.

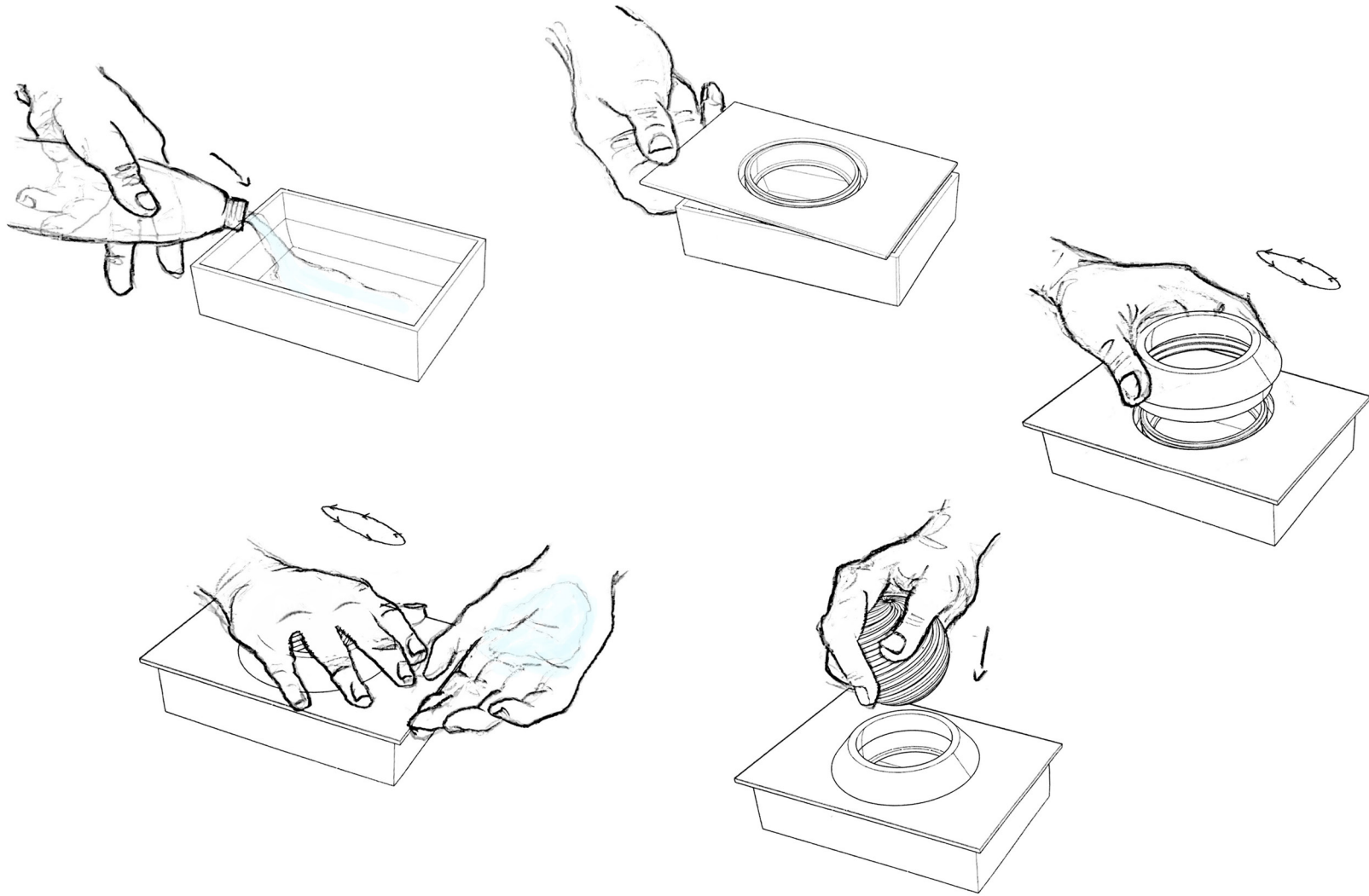
Rotate, designed to be printed in 3D, can be obtained by using recycled and recyclable plastic (ABS, PP, PE, PET) from other dispenser's waste (production and post-consumer).



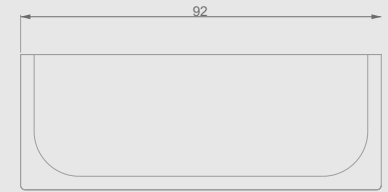
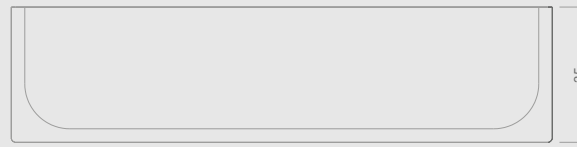
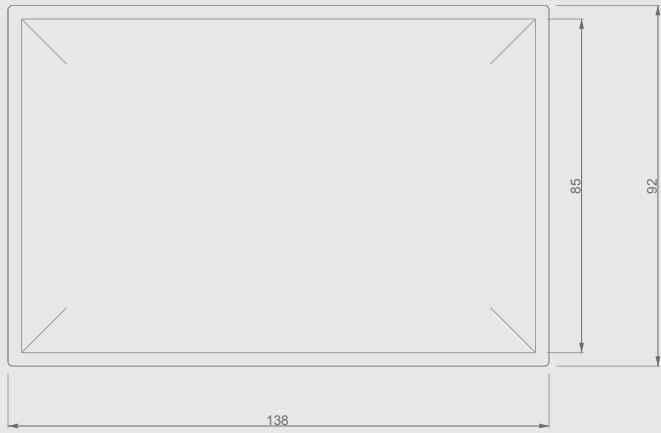
- The sphere has a spiral texture designed to facilitate the leakage of the product.
- The joint between the shelf and the upper extrusion presents a simple and practical thread, while the ball engages by friction.
- The space that is obtained between the ball and the joint allows the excess soap to fall back inside.
- The sphere does not touch the bottom of the container in order to make it easy to spin.
- The semi-transparency of the container allows to understand the quantity of the product that's still inside.
- Any rubber feet ensure the stability of dosing device during its use.



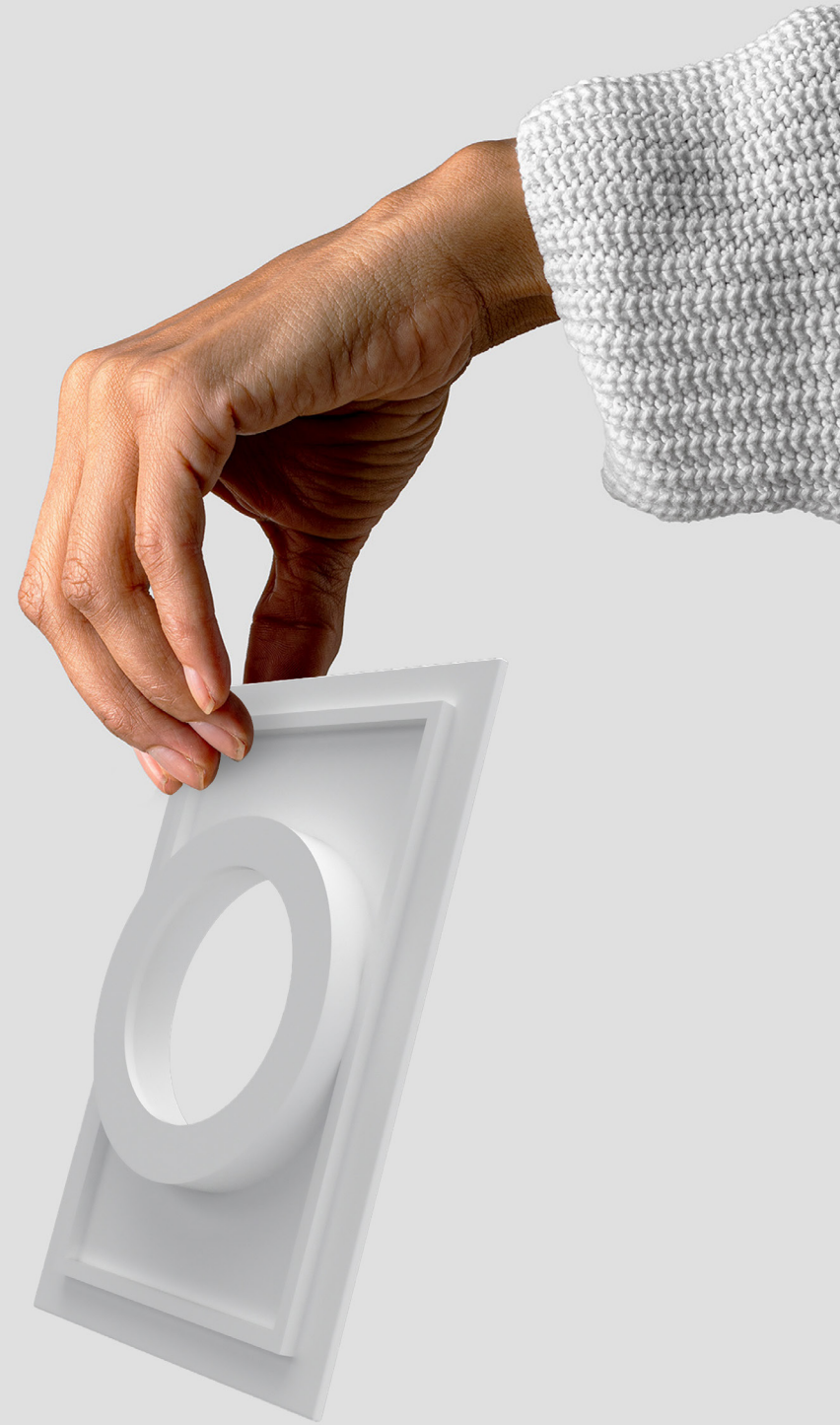
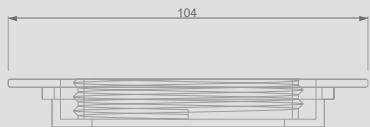
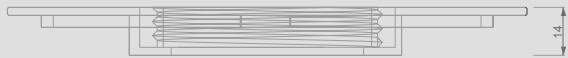
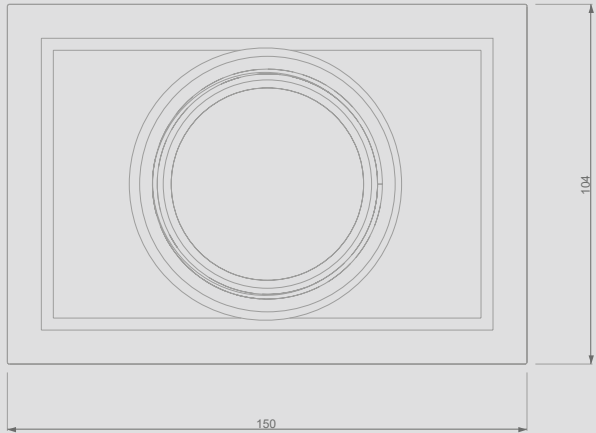
ROTATE



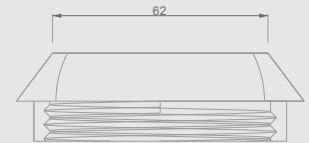
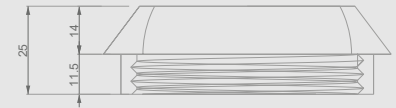
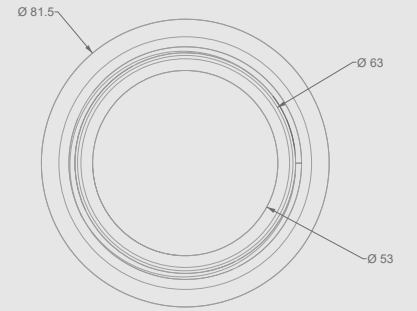
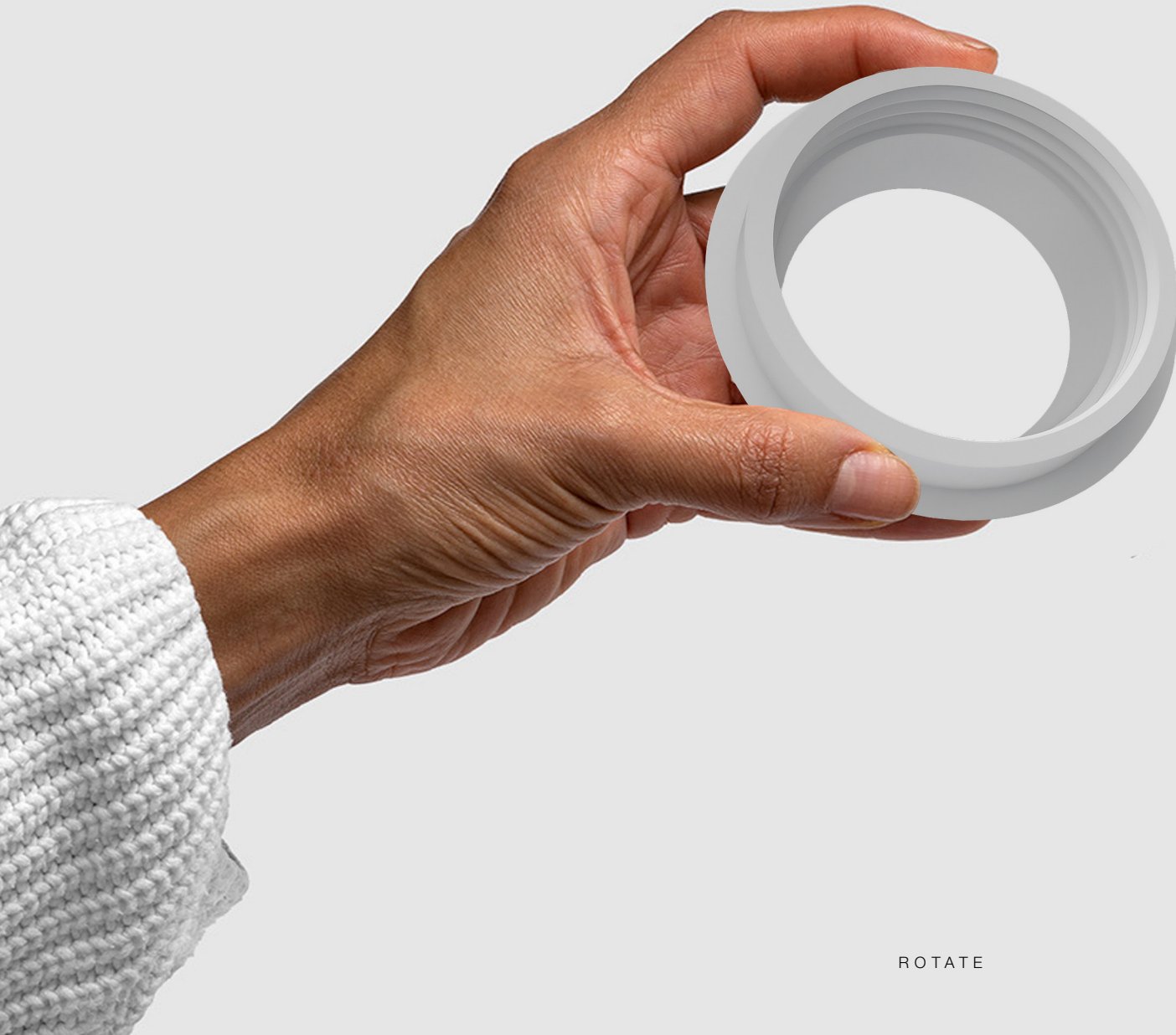
ROTATE



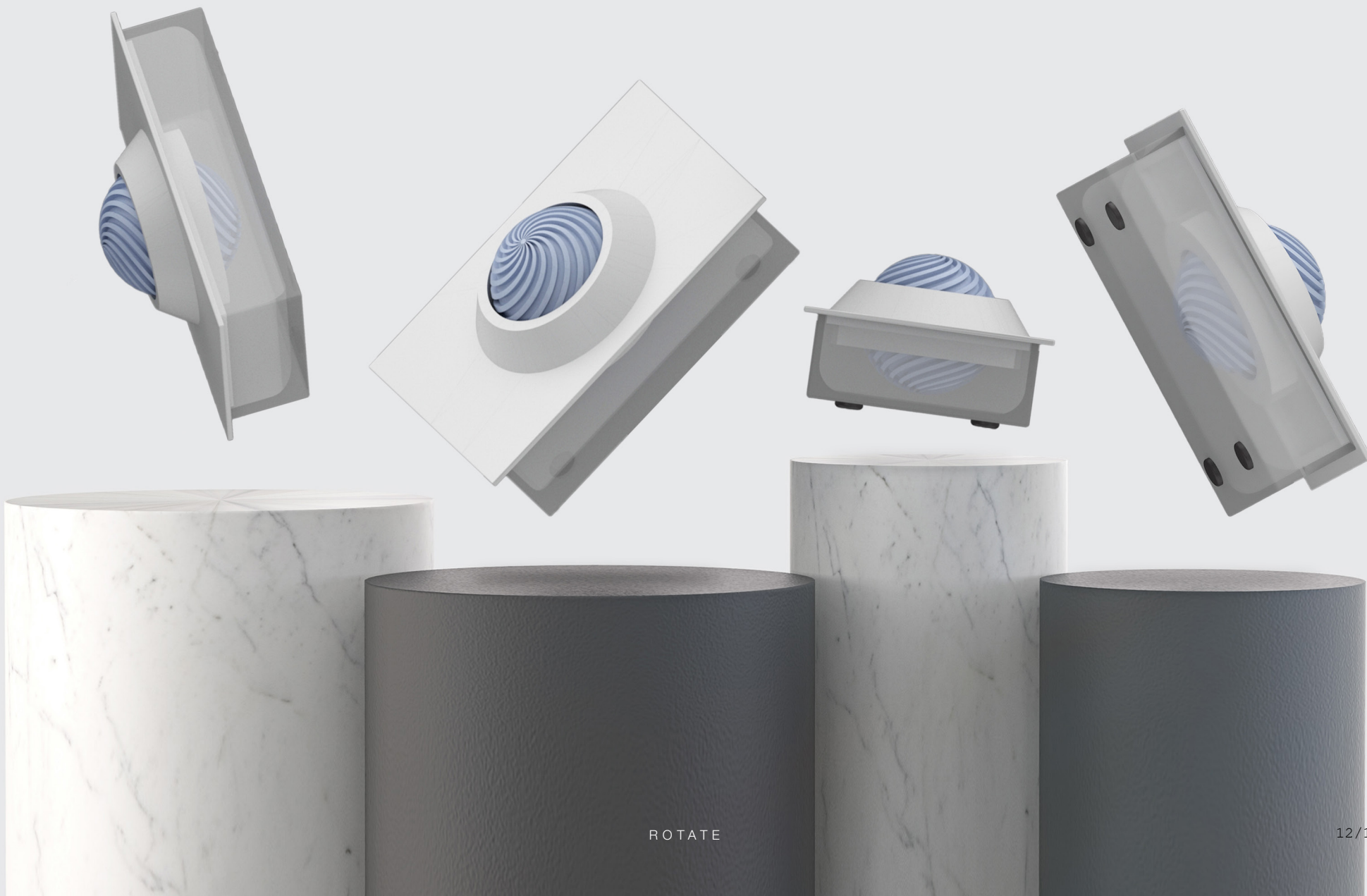
ROTATE



ROTATE



ROTATE



ROTATE



There are other colour options for the rotating sphere.
Yellow, Green and Red, along with Blue, basic coloring of Rotate, representing the code color of professional cleaning, and which gives liveliness to the project and a better perception of cleaning and hygiene.



ROTATE

